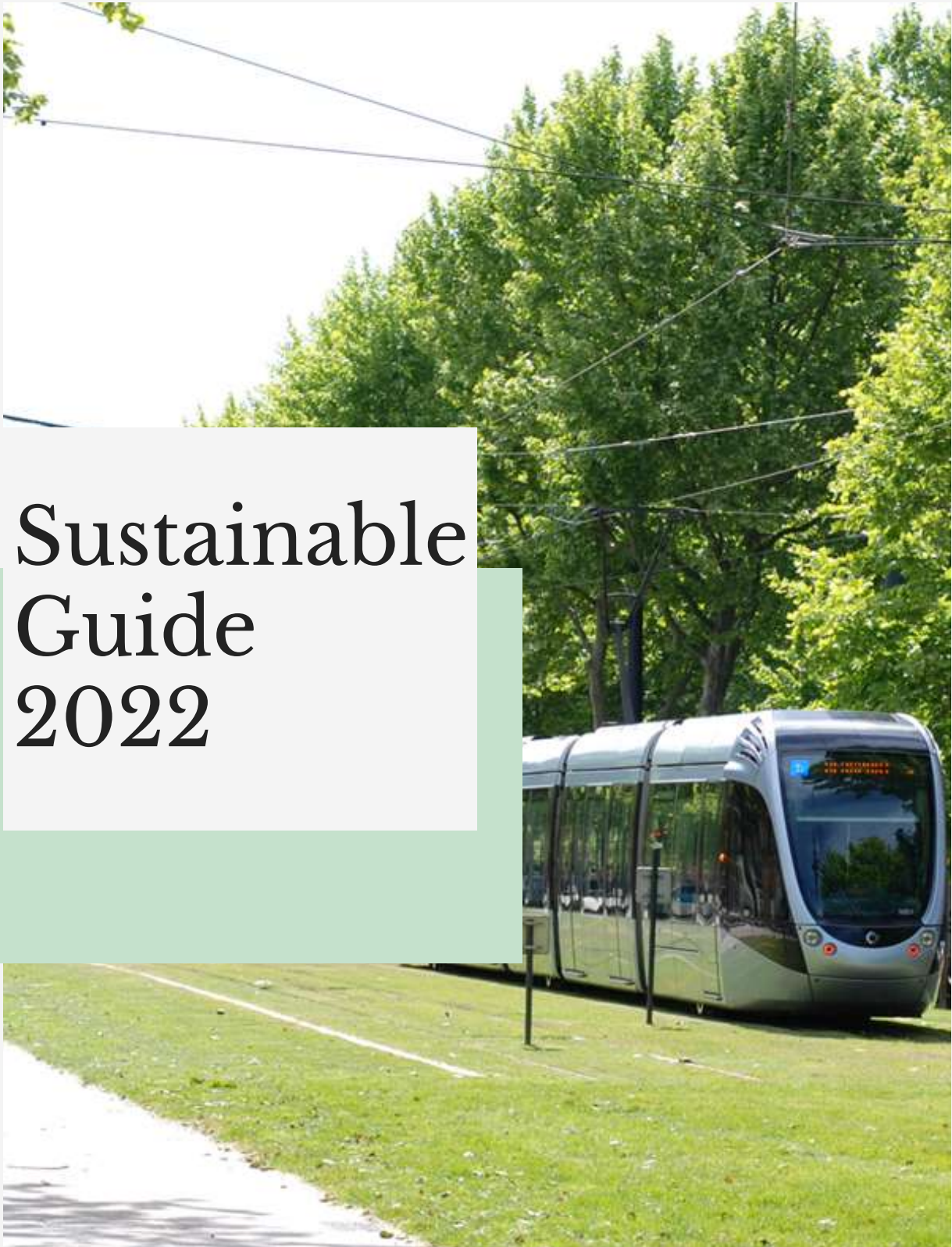


CONVENTION BUREAU TOULOUSE

Sustainable Guide 2022



Your eco-responsible event in Toulouse

In Toulouse, we are concerned about limiting our environmental impact and are committed to developing more sustainable business tourism.

The tourism industry (both business and leisure) contributes to high environmental impacts and must therefore preserve its resources through sustainable approaches.

Organising events that respect the planet and make sense has now become more than a trend, it is an indispensable priority. It is a reality for clients and agencies, but also an ambition for destinations. Initiatives in terms of eco-responsibility continue to flourish in La Ville Rose.

As a business destination, with a strong network of event professionals, we want to help you organise more responsible events, and help you find local professionals who meet your needs and expectations.



Toulouse in harmony with sustainable development

The general awareness of the need to preserve the planet has led companies to adapt their policies to changes in customer consumption. Numerous actions have been implemented in the city of Toulouse.



The Territorial Climate Air and Energy Plan (PCAET) - 2018/2023

In order to achieve these ambitious objectives, the strategy has been broken down into 6 axes comprising more than 80 concrete action sheets concerning the energy renovation of housing, the preservation of natural areas, eco-mobility, the production of local renewable energies, the support of economic actors to sustainably support energy transition initiatives, etc.

The PCAET in five key points

1. Air quality

Deployment of a specific action programme to reduce pollution, prefiguration of a low-emission zone, preservation of natural areas.

Some emblematic projects:

- The Mayor has committed to creating 10% of new green spaces within the city, thanks to projects such as the Ile du Ramier and the Grand Parc Garonne project.
- In order to prevent air quality thresholds from being exceeded, the French government, through the Ministry of State for Ecological and Sustainable Transition and the Ministry of Transport, wanted to set limits for local areas where air quality thresholds are regularly exceeded, aiming to establish Low Emission Zones (LEZ). A Low Emission Zone (LEZ) is an area where the most polluting vehicles are banned and access is determined by means of Crit'air stickers.

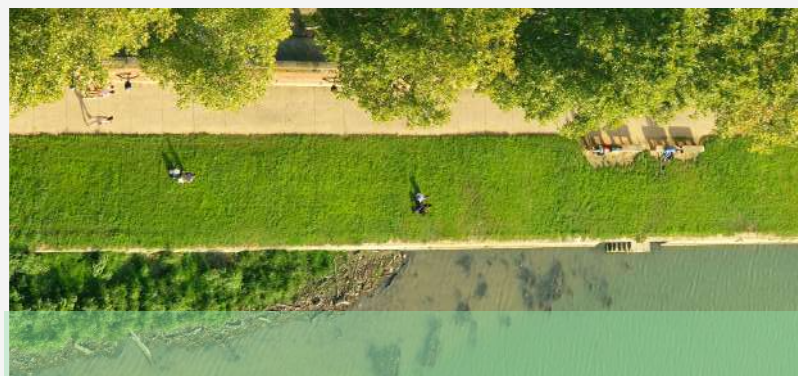


The Occitanie region committed to sustainable development

The Occitanie Region has adopted a new €150 million "hydrogen" plan in France. The plan, which uses renewable energy resources to produce "decarbonised hydrogen", proposes an "integrated strategy" of research, investment and project support. By 2050, the Region hopes to attract one billion euros of investment in the region, which would become a "leader in green hydrogen".

Concrete examples of projects:

- **Public lighting:** This is the number one electricity expense for municipalities. A large number of communes in the region are experimenting with new public lighting solutions.
- **Transport:** Developing intermodal alternatives, more public transport for less soft traffic... Most of the public policies for bus travel have been boosted to attract new passengers: over the last 10 years, the number of public users has increased by almost 5 times.
- **Solar panels:** Occitania is already the 2nd French region for installed photovoltaic power. A potential that is being developed with respect for architecture, landscapes and local agricultural customs.



2. Eco-mobility

An unprecedented commitment to the deployment of public transport (metro, 100% natural gas bus, cable car) and soft modes (bicycle plan, pedestrian facilities in the city centre and on the canal).

Some emblematic projects:

- **Hydrogen-powered buses:** Toulouse-Blagnac airport will host a hydrogen production and distribution station, thus becoming the first user to power four buses that will transport passengers.
- **Téléo:** Téléo, the southern urban cable car, a key transport project for the Toulouse conurbation, is part of the Mobilités 2020-2025-2030 project. It contributes to achieving the objectives set by the PCAET by facilitating travel in the southern arc of the conurbation (Colomiers-Montaudran). It aims to improve access to the major facilities in the south of the metropolis, where several major centres of attraction are concentrated:



4. Local and sustainable food

Bringing producers and consumers closer together for local, quality food in an innovative partnership.

To meet this challenge, Toulouse Metropole supports local agricultural projects such as market gardening areas throughout the city. The metropolis is helping to create the right conditions for the resumption of activities and the conversion of the market gardening plain to more environmentally friendly practices.

5. Innovation

- Deployment of a circular economic approach in business parks.
- Real-time measurements (first in France) of the temperature on the territory for a metropolis that adapts to climate change.

Energy management software for precise monitoring of the energy consumption of Toulouse City Council buildings and tracking of their evolution from one year to the next. Numerous projects for a sustainable territory: hybrid bus, reflection on new renewable energies, etc....



3. Renewable and recovered energy

Since 2005, Toulouse has financed various information campaigns for private individuals on energy and energy management, in particular on the renovation of their homes and the development of renewable energy. Doubling the production of renewable energy and its local use through several projects (biogas, photovoltaic, heating and cooling networks, geothermal energy, biomass).

Emblematic project :

The Cartoucherie eco-district has been designed to integrate several technical innovations to serve an environmental ambition. The bioclimatic design of the buildings and summer comfort were at the heart of the project. Indeed, a cooling network has been set up for the tertiary buildings to avoid the need for air conditioning. The use of various renewable energy sources is also favoured in this project. The PLUi-H (inter-communal local urban plan for housing) sets out development strategies and rules for land use and occupation in order to support the attractiveness of the territory by focusing on quality of life.



A green infrastructure for congresses : the MEETT

MEETT covers an area of 55 hectares. The site, designed by the architect Rem Koolhaas (OMA), is part of a sustainable development strategy, taking into account high environmental requirements in the design and construction of the buildings. This site, which opened in 2020, is one of the largest parks in France.

Solar power plant: The 3-hectare area has been completed. It consists of 10,700 photovoltaic panels that will produce the equivalent of the annual electricity consumption of 3,600 homes for a power of five Mwc and an annual production of 6,500 Mwh.

Certifications:

- **HQETTM certification:** is a French approach relating to construction that aims to limit short and long-term environmental impacts, while allowing for user-friendly and environmentally friendly building design.
- **The LEED[®] NC label** is the most established label at international level. It takes the HQE objectives for buildings and extends them to the immediate environment of the project: reduction of light pollution, alternatives to the use of vehicles, water-efficient landscaping, waste management, recycling of materials, etc.





We support you in your responsible actions

Through this sustainable guide, the Toulouse Convention Bureau offers you a list of service providers who have implemented responsible practices.

Are you planning to organise an eco-event or a positive impact event? Are you looking for a destination to organise your event?

The Toulouse Convention Bureau has compiled a list of local initiatives and players who have implemented sustainable practices in order to best meet your needs.

Good practice guide

Adopting good practice means first and foremost integrating the "sustainable development" dimension into the planning of your eco-event

01

FAVOUR SOFT MOBILITY AND REDUCE YOUR CARBON FOOTPRINT



Toulouse-Matabiau station has many regular connections with Bordeaux - 2 hours; Montpellier - 2 hours 15 minutes, Lyon - 4 hours or Paris - 4 hours 15 minutes.

You finally take the plane? Don't worry, Toulouse-Blagnac International Airport is officially certified level 3 in the Airport Carbon Accreditation and is aiming for level 3+ by 2024.

This is a global carbon management programme for airports that assesses their efforts to manage and reduce their CO2 emissions.

02

ANTICIPATING THE ISSUE OF WASTE AND THINKING ABOUT RECYCLING



- Selective sorting;
- Dematerialization of communication elements;
- Elimination of plastic bottles;
- Avoiding single-use products or favouring biodegradable or compostable products.

03

USE QUALITY LOCAVORE CATERING



- Fight against food waste;
- Products from organic, fair trade, locavore and seasonal agriculture;
- 100% ecological and reusable cutlery.

04

FOCUS ON NECESSARY, SUSTAINABLE AND RESPONSIBLE PURCHASING



- Reuse communication media such as tarpaulins, banners, kakemonos;
- 100% recycled and recyclable goodies.

05

MANAGE YOUR ENERGY



Being aware of the energy used for each event also means considering resources and moderating consumption.

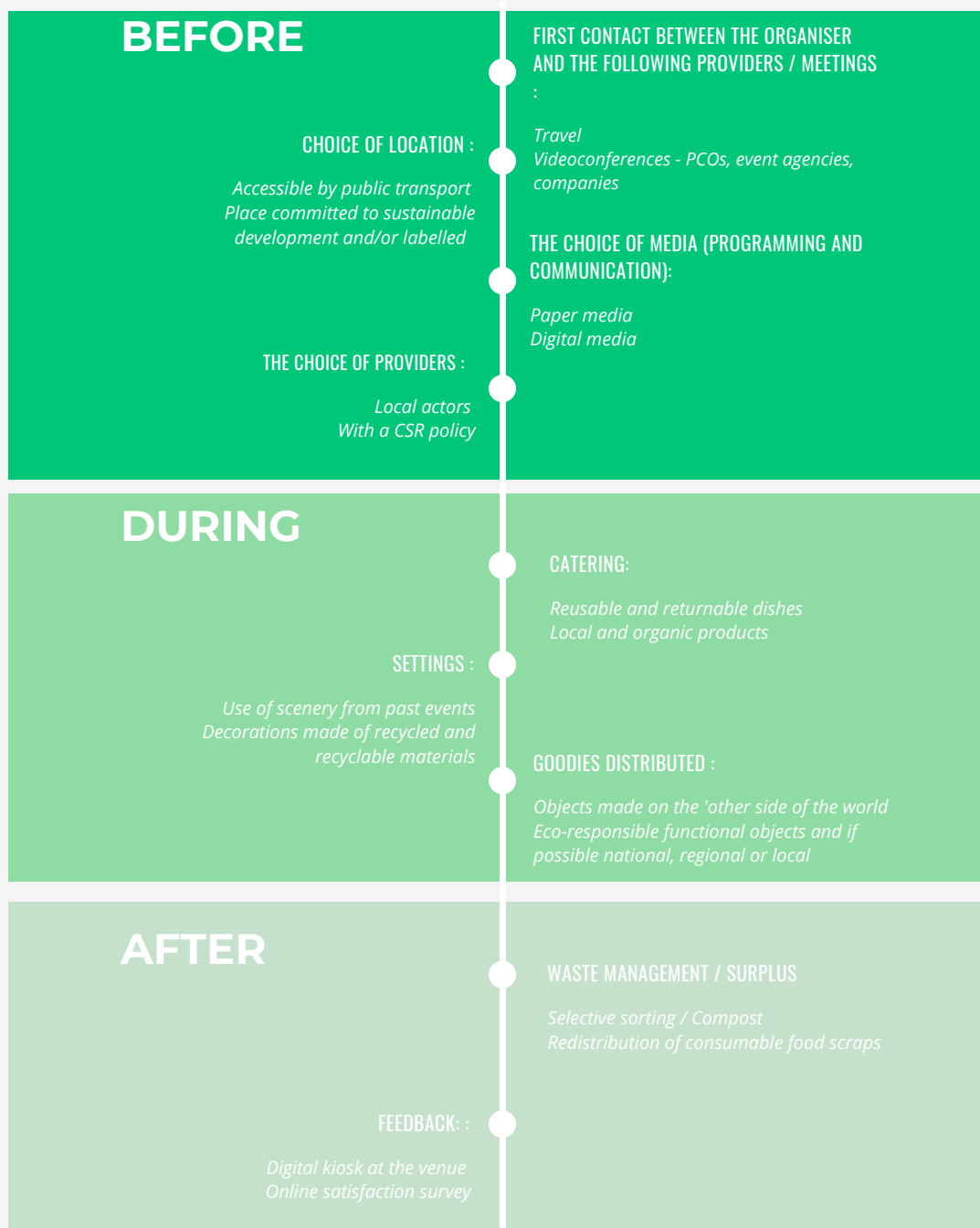
06

ASSESS THE ENVIRONMENTAL RESPONSIBILITY OF THE SELECTED SERVICE PROVIDERS, BY CHECKING :



- Adherence to an official ecological certification or label
- The implementation of good practices in terms of internal sustainable development
- The eco-labelled products used by the establishment.

Logistics for a professional event in a responsible way



GENERALITIES :

- Creation of an application for event participants (access map, programme, practical information, etc.)
- Introduction of more environmentally friendly transport and easier mobility
- Raising participants' awareness of sustainable development (carpooling, selective sorting, etc.)
- Highlighting of committed accommodation

Spaces

In response to the sustainability of an event and the strong demand from certain organisers, more and more venues are adopting their infrastructures and services to better meet environmental standards. More and more venues are adopting their infrastructures and services to meet environmental standards.

PARTENAIRE
Toulouse



DIAGORA

150 rue Pierre Gilles de gennes, 31670
Toulouse - Labège

diagora@diagora-congres.com
www.diagora-congres.com

OFFER: Diagora, located in the south-east of Toulouse, is a place of work and professional meetings on a human scale. The Convention Centre has around twenty spaces, most of which are modular. Among these spaces, the centre has a large hall of 2,200 m² and an amphitheatre with 500 seats. Diagora can accommodate up to 2,000 people seated.

SUSTAINABLE DEVELOPMENT APPROACH :

- Sorting of fermentable waste / selective sorting
- 80% LED lighting
- 370 m² of photovoltaic panels installed
- 2 beehives with 120,000 bees are installed on the roof
- Encourage local temporary exhibitions
- Suggestion of a range of ethical catering
- Development of local start-ups for innovative actions (connected hives, online registration management, carpooling incentives)

PARTENAIRE
Toulouse



TOULOUSE EVENEMENTS

Certification ISO 14 0001

11 Esplanade Compans Caffarelli
31500 Toulouse
05 62 25 45 45
contact@toulouse-evenements.com
https://toulouse-evenements.com/fr

OFFER : Toulouse Evénement-GL Events manages several venues in Toulouse

The Pierre Baudis Congress Centre on 6 levels (surface area: 6,000m² / capacity: up to 1,200 people) **ISO 14001 certified**

Les Espaces Vanel (surface area: 1,000m² divided into 5 modular rooms) **ISO 14001 certified**

And the new MEETT multifunctional space **HQE standard exceptional level I LEED NC label**

SUSTAINABLE DEVELOPMENT APPROACH :

- Quality approach to audiovisual equipment (recent, compliant and well-maintained equipment)
- Implementation of the "Think green" programme
- Energy management and optimisation of water consumption in buildings
- Limiting waste (during events but also outside)
- Training the group's designers in eco-design and drivers in eco-driving

PARTENAIRE
Toulouse



MIHARU : LE MAS DES CANELLES / LE MANOIR DU PRINCE

**Responsible Purchasing & Supplier
Relations Label**

contact@miharu.fr
www.miharu.fr

OFFER :

- The Mas des Canelles is located on the banks of the Canal du Midi, it has 2 large halls, cosy lounges and outdoor terraces (area: 350m² / capacity: up to 400 people)
- The Manoir du Prince is located in the south-east of Toulouse, it has large modular interior spaces and large outdoor terraces (area: 500m² / capacity: up to 400 people)

SUSTAINABLE DEVELOPMENT APPROACH :

- Sorting of paper and waste
- No use of plastic for dishes and other items
- Reduction of energy consumption with low-energy light bulbs / turning off lights and electrical appliances
- Recycling of ink cartridges, light bulbs and batteries
- Energy saving with the installation of new generation heating and the management of the closing of spaces
- Installation of equipment for the park's animals (birdhouses, animal food, etc.)

PARTENAIRE
Toulouse



MIHARU : LE VILLAGE BY C&A

**Responsible Purchasing & Supplier
Relations Label**

31 Allée Jules Guesde 31000 Toulouse
contactvillage@miharu.fr
www.levillagebycatoulouse.com

OFFER: The Village Espaces Événementiels by CA, located in the centre of Toulouse, has an innovative and different space to welcome start-ups and outside companies. It has a surface area of more than 2,600m² which can accommodate large groups.

SUSTAINABLE DEVELOPMENT APPROACH :

- Use of low-energy light bulbs
- Glazed area to reduce energy consumption
- No use of plastic products
- Use of suppliers with a sustainable approach
- Support for start-ups
- Respect for human, labour and environmental rights
- Compliance with the Charter for Energy Efficiency in Commercial Buildings

PARTENAIRE
Toulouse



NOOUS - MEETING BUSINESS CENTER

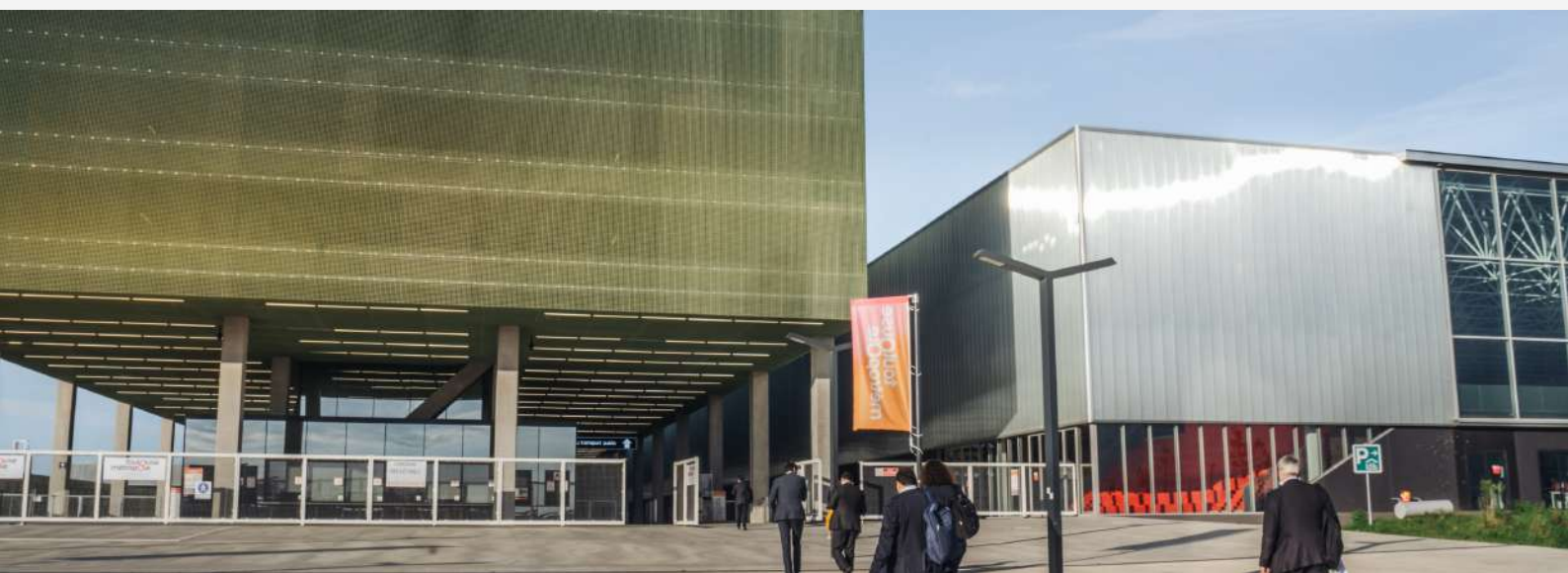
7 Allée des Pionniers de l'Aéropostale 31400
Toulouse

www.noous.com

OFFER: Noous - Meeting Business Center is located at the gates of Toulouse in a wooded park. The centre has 1,000m² of modular space divided into 9 rooms, which can accommodate up to 300 people

SUSTAINABLE DEVELOPMENT APPROACH :

- Use of low-energy light bulbs
- Glazed space to reduce energy consumption
- No use of plastic products
- Use of suppliers with a sustainable approach
- Support for start-ups
- Respect for human, labour and environmental rights
- Compliance with the Charter for Energy Efficiency in Commercial Buildings



Accommodation

It is also possible to book in Toulouse in an accommodation with a sustainable certification and/or charter!

The following establishments have the international Green Key label, the first sustainable tourism label for all tourist accommodation, the "Planet21" action programme or other certifications.

Green Key Labelled

The Green Key Label (international label) focuses on the sustainable management of their resource consumption in an ethical and sustainable manner.



APPART'CITY CONFORT TOULOUSE PURPAN

PARTENAIRE
Toulouse

14 Impasse de Lisieux 31300 Toulouse
05 34 50 97 00
www.appartcity.com

APPART'CITY CONFORT TOULOUSE DIAGORA LABÈGE

PARTENAIRE
Toulouse

190 rue Jean Rostand 31670 Labège
05 62 24 67 00
www.appartcity.com

CAMPANILE TOULOUSE CITÉ DE L'ESPACE

PARTENAIRE
Toulouse

Rue Maurice Hurel 31500 Toulouse
05 61 54 46 25
www.campanile.com

COURTYARD BY MARRIOTT TOULOUSE AIRPORT

PARTENAIRE
Toulouse

14 Bis, Rue Alain Fournier 31300 Toulouse
05 34 39 80 11
www.marriott.com/hotels/travel/tlscy-courtyard-toulouse-airport/

HOLIDAY INN TOULOUSE AIRPORT

PARTENAIRE
Toulouse

Portes du Bicentenaire de la Révolution française, 31700 Blagnac
05 34 36 00 20
www.hitoulouseairport.com

LE DOMAINE DE MONTJOIE

PARTENAIRE
Toulouse

63 Avenue de l'Aéropostale 31250 Ramonville-Saint-Agne
05 61 14 15 00
www.ledomainedemontjoie.com

L'INITIAL

1 rue Boudeville 31100 Toulouse
06 01 49 86 17
www.linitial-hotel.com

**LES PINS GALANTS**

137 Route de Tarbes 31170 Tournefeuille
0567 73 07 30
www.lespinsgalants.fr

**NH HOTEL TOULOUSE AIRPORT**

15 rue Charles Lindbergh 31700 Blagnac
05 61 06 22 97
www.nh-hotels.fr/hotel/nh-toulouse-airport

**PULLMAN CENTRE RAMBLAS**

84 Allées Jean Jaurès 31000 Toulouse
05 61 10 23 10
www.toulouse-meetingbypullman.fr/fr/

**RADISSON BLU TOULOUSE AIRPORT**

2 rue Dieudonné Costes 31700 Blagnac
0561 16 18 00
www.radissonhotels.com/fr-fr/marque/radisson-blu

**RÉSIDENCE INN BY MARRIOTT**

11 avenue d'Androgène, ZAC Andromède, 31700 Blagnac
05 67 90 09 01
www.marriott.com/en-us/hotels/tlstb-residence-inn-toulouse-blagnac-airport/overview/

**ZÉNITUDE TOULOUSE PARC DE L'ESCALE
ZÉNITUDE TOULOUSE FLUVIA
ZÉNITUDE TOULOUSE MÉTROPOLE**

05 31 61 74 00
www.zenitude-hotel-residences.com/fr_FR/residence/toulouse/119



ISO 14 001 certified

The ISO 14001 label (international label) is based on the principle of continuous improvement of environmental performance by controlling the impacts of the company's activities.

MERCURE TOULOUSE COMPANS CAFFARELLI

8 Esplanade Compans-Caffarelli 31901 TOULOUSE Cédex
05 61 11 09 37
mercure.accor.com/fr/france/index.shtml

PARTENAIRE
Toulouse



NOVOTEL TOULOUSE PURPAN AÉROPORT

23 Impasse de Maubec 31300
05 61 15 37 82
novotel.accor.com/fr/france/index.shtml

PARTENAIRE
Toulouse

Environmental labelling

This rating consists of a score between A and E, which is awarded to hotels according to 4 environmental indicators (impact on the climate, water consumption, consumption of non-renewable resources and the share of organic or eco-labelled products in the hotel's supplies).

EKLO HÔTEL

Ouverture cours de l'année 2022
www.eklohotels.com



Planet 21 Label

The Accor Group's Planet21 programme, which is characterised by a wide-ranging internal approach, focuses on eco-responsible infrastructures and services as well as healthy and sustainable food.

HÔTELS DU GROUPE ACCOR DE TOULOUSE

PARTENAIRE
Toulouse



Caterers and restaurant owners

In order to meet the changing expectations of customers, Toulouse-based players have adapted their offers. Consumers generally prefer local, quality, seasonal products and, if possible, labelled products. Caterers and restaurant owners are thus moving towards a more sustainable approach in line with these changes in consumption patterns.



C&N TRAITEUR

**Ambassador of regional products in the Club
virtueux des Traiteurs Qualivores**

4 imp. Raymond Loewy 31140 Aucamville
05 61 37 53 14
www.c-et-n-traiteur.fr

OFFER :

For more than 18 years, C&N Traiteur has been offering refined cuisine and tailor-made services that best meet your needs and desires.

SUSTAINABLE DEVELOPMENT APPROACH :

- A seasonal cuisine that highlights local products.
- Fresh, organic products, grown and raised by local producers (SIQO: official sign of identification of quality and origin)
- CSR policy placed at the centre of strategic thinking Use of recyclable or compostable products
- Quality and food safety standards (HACCP)



FALCOU TRAITEUR

**Certification to the international standard
ISO 20 121**

15 rue du Cassé Parc d'activités du Cassé 1,
31240 Saint-Jean
05 62 89 04 70
www.falcou.fr

OFFER : For more than 35 years, Falcou Traiteur has been advocating the art of quality and simplicity and is dedicated to creating unique moments.

SUSTAINABLE DEVELOPMENT APPROACH :

- Reducing energy consumption (gas, electricity, hydrocarbons, water)
- Respecting the seasonality of products
- Use of local and regional producers committed to the terroir
- Daily selective sorting of waste
- Daily health checks and monitoring of compliance with HACCP standards
- HACCP throughout the production chain
- A 700m2 laboratory that can accommodate receptions of 20 to 5,000 people
- Offers ideal working conditions for its team



SKANDI& PERGO

Label "Qualivores" European approval
N°31588002 EC

35 rue écopole 31270 Villeneuve-Tolosane
 05 34 27 10 38
www.skandi.fr

OFFER :

Established since 1997 in Toulouse, Skandi & Pergo offers tailor-made services to professional clients.

SUSTAINABLE DEVELOPMENT APPROACH :

- Home-made cooking, with mainly fresh products
- Priority to short circuits and regional products (collaboration with regional producers for optimised product quality)
- The best quality-quantity-price ratio (commitment to "eating well" and "good eating" at the right price)
- HACCP-compliant laboratory



PAUL DANIEL TRAITEUR

"Qualivore" ambassador in partnership
with Irqualim and the Occitanie Region

9 rue de Bazus 31380 Garidech
 05 34 26 02 90
www.pauldaniel.fr

OFFER: For 20 years, Paul Daniel Traiteur has been offering traditional cuisine of excellence in order to guarantee the highest quality in terms of services.

SUSTAINABLE DEVELOPMENT APPROACH :

- A traditional cuisine of excellence prepared from fresh and local products, selected for their quality and origin
- Selective sorting
- Careful consumption of water and energy
- Limiting food waste (in the event of cancellation of services for less than 24 hours, certain clients undertake to donate them to charitable associations)
- Improving working conditions while respecting human relations: with partners and suppliers.



DÉMOULIN TRAITEUR

Obtained health approval CEE31993447 (2003)

8 rue Marius Tercé 31300 Toulouse
www.demoulin-traiteur.com

OFFER : For more than 25 years, Démoulin Traiteur has been offering its services to professionals in and around Toulouse.

SUSTAINABLE DEVELOPMENT APPROACH :

- The choice of raw materials :
- Selection of products according to the seasons
- Favours short circuits by using local suppliers
- Minimise the use of salt and fat
- Waste recycling:
- Selective sorting applied to laboratory waste
- (organic waste, paper and cardboard, glass, oil, etc.)
- 100% recyclable disposable materials
- Quality and food safety standards (HACCP). Implementation of rigorous hygiene and traceability rules



LES JARDINS DE L'OPÉRA

(Restaurant)

Green Food label

1 Place du Capitole 3100 Toulouse
05 61 23 07 76
www.lesjardinsdelopera.fr

FLOW HOUSE

(Restaurant)

Ecotable (grade 3: an example for all)

4 bis Avenue Frédéric Estèbe 31200
Toulouse
05 861 75 89 63
www.flowhouse.fr

LE PAIN ET LA ROSE

(Restaurant)

Ecotable (grade 2: advanced approach)

5 rue de la Cartoucherie 31300
Toulouse
05 62 74 13 18
www.lepainetlarose.fr

LA CANTINE ARKOSE

(Restaurant)

Ecotable (grade 2: advanced approach)

13 route de Lavaur 31240 L'Union
05 81 33 02 19
www.toulouse.arkose.com

Agencies and service providers

Agencies and service providers act as intermediaries between clients and professionals, helping to take into account the various elements that an event generates. The agencies and service providers listed in this guide are part of a sustainable approach, with the aim of reducing the environmental impact they have on the planet. They play a key role in the design of eco-events.

PARTENAIRE

Toulouse



VIDÉLIO EVENTS

PRESTADD Label

15 rue Gaston Evrard 31100 Toulouse
05 62 24 89 80
www.videlio.com

OFFER : Technical service provider, Videlio-Events has a team of technical experts and a stock of audiovisual equipment dedicated to the realisation of various services.

SUSTAINABLE DEVELOPMENT APPROACH :

- Development of a CSR policy based on 6 value-creating levers:
- Promoting the development and fulfilment of their employees
- Building a long-term relationship with their partners / manufacturers
- Supporting their customers throughout their projects all over the world with an optimal level of quality
- Drive the market through innovation
- Acting responsibly on a daily basis Financing and investing wisely

PARTENAIRE

Toulouse



ABAQUES AUDIOVISUEL

**Certification to the international standard
ISO 20 121**

Labelled PRESTADD ICOM 21

EASY TRI

Parc d'Activités du Cassé 1, 3 rue du Cassé 31240
Saint-Jean
05 34 25 07 25
www.abagues.fr

OFFER: Technical service provider and partner of professionals. Abaques has been providing global audiovisual solutions to companies for more than fifteen years.

SUSTAINABLE DEVELOPMENT APPROACH :

- Evolution of electricity consumption
- Evolution of the volume of sorted waste
- Energy-saving and sustainable installations
- Increase in the number of associations supported
- Increase in the annual volume of training

PARTENAIRE
Toulouse



LÉNI AGENCE

ISO 20 121 Label

25 rue de la Zone Artisanale de Ribaute, 31130
Quint-Fonsegrives
05 62 24 82 82
www.leni.fr

OFFER: Created in 1996, the Léni group is today a reference in terms of IT solutions in the events market.

SUSTAINABLE DEVELOPMENT APPROACH :

Léni's responsible management policy covers the 4 principles of sustainable development:

- Duty of inclusion
- Duty of care
- Duty of integrity
- Duty of transparency

PARTENAIRE
Toulouse



GRANHOTA

65 allée Maurice Sarraut 31300 Toulouse
09 81 00 25 05
www.granhota.fr

OFFER: As a provider of activities and strongly attached to the Occitan territory, for Granhota, the rivers, towns and villages are a real playground for discovery, which they wish to develop while preserving them.

SUSTAINABLE DEVELOPMENT APPROACH :

- Ecological equipment, installation of dry toilets
- Massive tree planting
- Reuse of waste in the form of compost
- Reuse of our grey water to irrigate our plants
- River cleaning, eco-citizen awareness
- Future projects: installation of solar panels, planting of an orchard, installation of glass roofs to heat the interior of the facilities naturally

PARTENAIRE
Toulouse



SOP EVENTS

Labelled Committed to CSR AFAQ 26 000 model

8, Avenue Servanty 31704 Blagnac
05 34 39 13 91
<https://sop-events.fr>

OFFER : SOP Events is a DMC (Midi-Pyrénées, Languedoc-Roussillon and Aquitaine) receptive agency specialising in the organisation of team building, incentives and evening events for agencies and companies.

SUSTAINABLE DEVELOPMENT APPROACH :

The steps taken by SOP Events are based on 7 areas of action that take up the 7 central questions of ISO 26000:

- governance
- human rights
- labour relations and working conditions
- the environment
- fair practices
- consumer issues
- communities and local development

OPTIONS TOULOUSE

Label PRESTADD

6 rue Gaye Marie 31300 Toulouse
05 34 25 11 00
www.options.fr

EQUIPAGE & CO

(1 rue Mondran 31400 Toulouse
05 61 21 23 63
www.equipage-and-co.fr

CITY ONE EVENTS

Handi welcoming, label Ecovadis, The Global Compact We Support, Women Equity

23 rue Lafayette 31000 Toulouse
05 62 30 07 00

PUR'EVENTS

Label Ecovadis

Les Ambassadeurs, 2 allée des Nymphéas 31240 L'Union
05 34 25 68 30
www.purevents.fr

TIVERIA

Label Séminaire Vert

11 Grande Rue St-Michel 31400 Toulouse
04 97 03 68 68
www.tiveria.fr

EVENEMENTIS

Label Ecovadis

2 Place d'Italie 31400 Toulouse
05 31 54 89 46
www.evenementis.com



Transportation

Transport is now the sector that generates the most "pollution" during events. Companies in the sector are implementing alternatives to limit their carbon footprint and CO2 emissions.

Once in Toulouse, there are other options available to participants such as a wide range of soft transport options and a dense network of metros, trams and buses that serve the whole city.

PARTENAIRE
Toulouse



AUTOCARS NÉGOTI

Euro IV, V and VI standards

Objective CO2" Charter

Action Carbone" programme

2 rue Jean Moulin 31830 Plaisance-du-Touch 05
62 13 54 00
www.negoti.fr

OFFER: The coach operator Negoti is both a travel and passenger transport company. The company has been involved in a sustainable development approach for several years.

SUSTAINABLE DEVELOPMENT APPROACH :

- Tyre recycling
- Management of industrial waste in collaboration with the company Chimirec
- Optimisation of energy consumption in diesel, water and electricity
- Raising drivers' awareness of eco-driving and installing eco-driving indicators on board vehicles
- Support the actions carried out by the association "Du flocon à la vague" to raise awareness and educate the general public and professional players about water protection
- Fight against greenhouse gas emissions

PARTENAIRE
Toulouse



TISSÉO

AFNOR NF 281-2016 certification

Charter "Customers: your satisfaction, our priority".

4 impasse Paul Mesplé 31000 Toulouse
05 61 41 70 70
www.tisseo.fr

OFFER: Tisséo is the commercial brand of the public transport network of Toulouse and its region. It allows you to move easily and quickly throughout the agglomeration and its surroundings.

SUSTAINABLE DEVELOPMENT APPROACH :

- Reduce waste emissions and ensure their recovery 2016
- Reduce and control energy consumption and reduce greenhouse gas emissions
- Committed to providing mobility for all (lifts, etc.)
- Easily accessible information on mobility aids (lifts, etc.)
- Accessibility of the Allô Tisséo service for the deaf and hard of hearing
- Development of a technical specification for the creation of fully accessible bus stops.

PARTENAIRE
Toulouse



AUTOCARS ORTET

Euro V and VI standards "Objective CO2"
charter AFQ 14 001 standard

ZA de Bordegrosse 31220 Cazères sur Garonne
05 61 90 53 03
www.autocars-ortet.com

OFFER: The coach operator Ortet is located in the Toulouse region and has a fleet of 70 vehicles. Ortet operates in the public transport sector as well as in passenger transport.

SUSTAINABLE DEVELOPMENT APPROACH :

- Reduction of pollutant births
- Management of industrial waste (used oil, batteries and other harmful by-products)
- Awareness raising and training of drivers in eco-driving
- Renewal of the vehicle fleet to reduce greenhouse gas emissions
- Regular maintenance of vehicles
- Reduction of industrial waste and elimination of hazardous products
- Wastewater treatment for vehicle washing

PARTENAIRE
Toulouse



LES VOYAGES DUCLOS

Euro V standard
AdBlue standard

23 Allée Jean Jaurès 31000 Toulouse
05 62 07 05 04
www.voyage-duclos.com

OFFER: The Duclos company is a coach operator capable of carrying out various types of passenger transport in the south-west of France. It is implementing a sustainable approach in its business.

SUSTAINABLE DEVELOPMENT APPROACH :

- Recycling of office waste
- Sorting of industrial waste with the companies CHIMIREC and MEVA
- Renewal of the vehicle fleet to comply with anti-pollution standards
- Management of water and electricity consumption
- Training of drivers in eco-driving and in the current regulations of the highway code
- Use of digital technology for customer information and communication

PARTENAIRE
Toulouse



AUTOCARS CHAUCHARD

AFAQ 14 001 standard
Objective CO2" Charter

6 rue Borderasse 31700 Blagnac
05 61 16 49 00
www.autocars-chauchard.fr

OFFER: Specialists in coach transport for over 90 years, Autocars Chauchard has a wide range of comfortable vehicles with 1 to 63 seats.

SUSTAINABLE DEVELOPMENT APPROACH :

- Sorting, collection and reduction of waste
- Dematerialisation of administrative documents
- Regular renewal of vehicles to meet the latest anti-pollution standards



VERBUS

201 Chemin des Agries 31860 Labarthe-sur-Lèze
05 61 06 91 43
www.verbus.com

OFFER: The company Verbus is a coach operator in the south-west of France which offers transport of people in various forms, whether it be for trips or for business events.

SUSTAINABLE DEVELOPMENT APPROACH :

- Waste management
- Staff training in eco-driving and strict monitoring of fuel consumption and regular renewal of the vehicle fleet
- Computerised optimisation of schedules and respect for working hours, working conditions and regulations





GDS Index

The Convention Bureau is committed to a sustainable development approach to guide business tourism, its stakeholders and the events industry towards more environmentally friendly tourism. Taking into account its current and future economic, social and environmental impacts, and responding to the needs of visitors, professionals, the environment and host communities, Toulouse is the fourth French city to join the dynamic Global Destination Sustainability Index (GDS-Index).

The Global Destination Sustainability Index is a programme to measure, benchmark and improve the sustainability strategy (environmental, social and economic) and performance of events and business tourism at destination level.

It includes recognised partners in the business meetings and events industry: ICCA - International Congress and Convention Association, ICCA Scandinavia, IMEXgroup, ECM - European Cities Marketing, MCI.

The GDS-Index focuses primarily on destinations engaging in business tourism and its progression, and assesses destinations in 4 key areas

Environmental performance

Supplier performance

Social progress performance

Destination management performance

The GDS-Index produces an annual ranking of the world's most sustainable cities. To do this, cities must meet 70 criteria and are given a higher or lower score in each of them.

Let Toulouse inspire you!

Convention Bureau Toulouse

The Toulouse Convention Bureau assists project leaders and event organisers to make the city easier for them.

- Support in putting together the application file for a professional event project
- Putting you in touch with the private and public players in the destination
- Help in finding professionals adapted to the needs of the project
- Access to a personalised management platform
- Organisation of inspection visits
- Implementation of the welcome pack

A dedicated team of experts in its market is at your disposal.
Organise your tailor-made event!



Convention Bureau **Toulouse**

Agence d'attractivité Toulouse Métropole

2, rue d'Alsace Lorraine
31000 TOULOUSE

Tél : +33 5 81 31 30 20
cvb@toulouseatout.com